

Series
B PUMP

2-10HP/1,5-7,5kW

Trasmissione a cinghia/ Belt transmission



QUALITY MADE IN ITALY

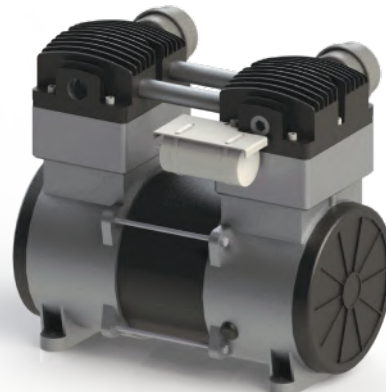
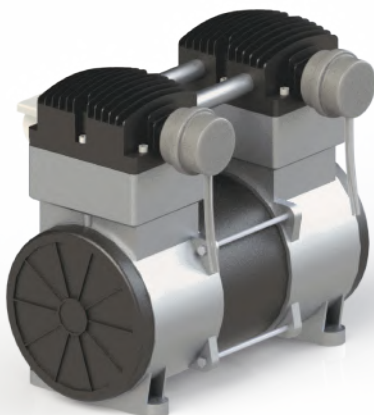
Codice Code	Modello Model	Type	Pressure		Power		N.Cylinder	l/min	CFM	m³/h	mm-inch-type	r.p.m.	kg
			bar	p.s.i.	HP	kW							
12400	B2800	Monostadio / Single stage	11	159	2	1,5	2	255	9	15,3	280-11,02-1A	1400	10
12403	B3800B	Single stage	11	159	3	2	2	330	11,6	19,8	280-11,02-1A	1400	15
12405	B5900B	Bistadio / Double stage	11	159	5,5	4	2	653	23	39,2	430-16,53-2A	1400	17
12406	B6000	Double stage	11	159	7,5	5,5	2	827	29,2	49,6	430-16,53-2A	1400	26
12407	B7000		11	159	10	7,5	2	1210	42,7	72,6	430-16,53-2A	1300	38

COMPRESSOR **PUMPS**

Series

OIL FREE

1-2HP/0,75-1,5kW



Codice Code	Modello Model	Type	Pressure		Power		N.Cylinder	l/min	CFM	m³/h	r.p.m.	kg
			bar	p.s.i.	HP	kW						
12120	C 90	Oil Free	8	116	1	0,75	2	95	3,4	5,7	1400	9
12121	C 196	Oil Free	8	116	1,5	1	2	190	6,7	11,4	1400	17
12122	C 200	Oil Free	8	116	2	1,5	2	220	7,7	13,2	1400	20